



# The Deep South

Volume 3, Issue 1

Summer 2009

**Board of Directors**

**Eddie Tebbe**  
Board Chairman

**Bobbie Bedney**  
Board Vice Chair

**Polly Boudreaux**  
Secretary

**Lang Le**  
Treasurer

**Board Members**

**Dr. Sarintha Stricklin**  
**Kelly Levasseur**  
**Yolanda White**  
**Claudia Smith**  
**Laura Iveson**  
**Kathy Hume**

**FHF of SELA Team**

**Carol Calix**  
Executive Director

**Donnica Conway-Strawder**  
Projects Coordinator

**Danielle Marshall**  
Family Advocate

**Jessica Lance**  
Bookkeeper

**Fay Daspit**  
Family Advocate

**Willie Martin**  
MHSD Office Assistant

**Delery Rice**  
LaCAN Leader

## The State of the Center Address by Carol Calix

It is hard to believe that we are beginning our third year. A lot of blood, sweat and tears have gone into the development of the Families Helping Families Center in New Orleans. We have so much to be thankful for as we reflect on the past two years.

We are blessed with a really great, involved board of directors. They all have taken a personal and vested interest in the success of the center. They have done so much more than just put their name on our newsletter.

We are blessed with a very committed and dedicated staff, who can empathize with the families that we serve.

We are blessed with funders that are passionate about the work that they do and the work that we do on their behalf.

We are blessed with a network of FHF centers that are dedicated to creating centers of excellence that families can depend on, no matter what part of the state they are in.

We are blessed with families that call upon us and depend on us to help them find the information and resources that they seek in an effort to know their rights and responsibilities and to become empowered.

As we move into our third year, some positive changes are going to take place. Donnica Conway-Strawder has been promoted to the position of Projects Coordinator. She will assist in staff development and training and will coordinate our workshops and conferences. We will also be adding three new staff members in July, two to assist with education issues and one will become our Health Information Specialist.

By this time next year our Next Chapter Book Club and Families Can't Wait programs will be in full swing. We will continue to seek programs that will help to improve and enhance the lives of individuals with disabilities. And we invite everyone to be a part of the work that we do. It takes every one of us working together to make it another successful year.

*Opinions contained herein do not necessarily represent those of the funding source, and no endorsement should be inferred.*

### Inside This Issue

Online Education Trainings	2
Transition Workshop	3
Education-Related Workshops	4-5
49 Ways to Handle the Hard-to-Handle Child	6
Emergency Preparedness	7
2010 Family Forum Preview	8
St. Bernard Autism Spectrum	8
Sensory-Friendly Films	9
Next Chapter Book Club	10
People First of Louisiana	11
Medical Transportation	12-13
Donations Page	14
The IEP and Your Child's Health	15-17
LA-Y.E.S. Calendar of Events	18
Conference Registration Form	19
Join Disability Groups	20

## *July, August, September 2009*

### Online Education-Related Workshops

In today's very busy world sometimes it is just impossible to go to an in-person training. In keeping with the technology of today parents can now participate in trainings online via their computer. All of the meetings below are hosted by LaPTIC, Louisiana's Parent Training and Information Center and will be made available through "ReadyTalk". For information about how to participate in the online trainings, contact Donnica at 943-0343 or email her at [dconway@fhfsela.org](mailto:dconway@fhfsela.org) for a link to connect. More trainings are available at [www.laptic.org](http://www.laptic.org).

#### July 2009

**IEP Team Members:** The Individualized Education Program is designed by IEP team members. Who is required to be on the IEP team? Can parents participate in deciding who will and will not attend? Find out.

**Date:** Monday, July 06, 2009  
**Time:** 12:30 Noon - 1:30 p.m.  
**Presenter:** Donnica Conway

**Introduction to Procedural Safeguards:** Provides an overview of many central provisions of IDEA 2004 and its regulations, including parent participation, prior written notice, the procedural safeguards notice, and more.

**Date:** Monday, Aug 17, 2009  
**Time:** 12:00 Noon - 1:00 p.m.  
**Presenter:** Donnica Conway

**Least Restrictive Environment Decisions:** How should an IEP Team determine what is the Least Restrictive Environment for each individual student? Join us to learn what IDEA 2004 says about LRE.

**Date:** Friday, July 24, 2009  
**Time:** 10:00 a.m. - 11:00 a.m.  
**Presenter:** Donnica Conway

#### September 2009

**Least Restrictive Environment Decisions:** How should an IEP Team determine what is the Least Restrictive Environment for each individual student? Join us to learn what IDEA 2004 says about LRE.

**Date:** Monday, Sept 14, 2009  
**Time:** 10:30 a.m. - 11:30 a.m.  
**Presenter:** Donnica Conway

#### August 2009

**Meetings of the IEP:** What does IDEA require with respect to meetings of the IEP Team and what happens there?

**Date:** Thursday, Aug 06, 2009  
**Time:** 10:30 a.m. - 11:30 a.m.  
**Presenter:** Donnica Conway

**Meetings of the IEP:** What does IDEA require with respect to meetings of the IEP Team and what happens there?

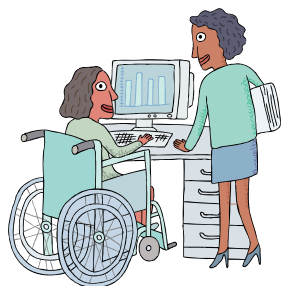
**Date:** Tuesday, Sept 29, 2009  
**Time:** 10:30 a.m. - 11:30 p.m.  
**Presenter:** Donnica Conway

## *Transition Workshop*

*Thursday, August 13, 2009*

*9 am—12:30 pm*

*Urban League of New Orleans  
2322 Canal Street  
New Orleans, LA 70119*



*If you have a child in high school, this is a workshop you must attend in order to understand the transition from school to adult living.*

*Presentations will include:  
The Louisiana Department of Education  
Continuing Tutorship/Interdiction  
Employment Opportunities  
Social Security  
Ticket to Work*

*And agencies that assist with the transition will be available to answer your questions.*

*Seating is limited so call early to reserve a spot.  
504-943-0343 or 1-877-243-7352*

# *Calendar of Events July - September 2009*

## *Education-Related Workshops*

### **IEP Boot Camp                      July 11 and August 20, 2009**

Parents come join us for this fresh, new approach to providing you with information about the IEP process and the IEP document. Learn how you can actively participate in each step of your child's IEP. Increase your confidence and effectiveness in requesting appropriate educational services for your child. There will be a limited number of participants in each boot camp. Register early. Participants will receive a copy of our new parent manual developed by Charlene Comstock-Galagan. The IEP boot camp training will be based on the manual. If you want appropriate educational services for your child you don't want to miss the IEP boot camp.

**Date:** Saturday, July 11, 2009  
**Time:** 10 a.m.—noon  
**Location:** Families Helping Families of SELA  
 4118 Franklin Ave., New Orleans, LA  
**To register, call:** 504-943-0343

**Date:** Thursday, August 20, 2009  
**Time:** 9:00 a.m. - 11:00 a.m.  
**Location:** Chalmette Church of Christ  
 200 De Le Ronde Dr., Chalmette, LA 70043  
**Presenter:** Donnica Conway  
**To register, call:** 504-943-0343

### **Create and Take                      July 21 and September 19, 2009**

Create a Newsletter, Brag Book, or Portfolio to introduce your child to next year's school staff. Help teachers know they're going to love your child before the first day of school. We'll give you the tools to create something wonderful to make, take and share.

**Date:** Tuesday, July 21, 2009  
**Time:** 11:00 a.m. - 1:00 p.m.  
**Location:** Belle Chasse Library  
 8442 Hwy 23, Belle Chasse, LA 70037  
**Presenter:** Donnica Conway  
**To register, call:** 504-943-0343

**Date:** Saturday, September 19, 2009  
**Time:** 11:00 a.m. - 1:00 p.m.  
**Location:** Families Helping Families of SELA  
 4118 Franklin Ave., New Orleans, LA 70122  
**Presenter:** Donnica Conway  
**To register, call:** 504-943-0343

# *Calendar of Events July - September 2009*

## *Education-Related Workshops*

### **Parent Movie Night July 15 and August 19, 2009**

Parents, FHFSELA would like to invite you to come out every 3<sup>rd</sup> Wednesday of the month to our "Parent Movie Night." This night will feature a movie, refreshments and short discussion.

Date: July 15, 2009

Time: 6:00 p.m.

Movie: **Including Samuel**

Running Time: 58 minutes

Location: Families Helping Families of SELA  
4118 Franklin Ave.  
New Orleans, LA 70122

To register: 504-943-0343

Date: August 19, 2009

Time: 6:00 p.m.

Movie: **First I.E.P.**

Running Time: 30 minutes.

Location: Families Helping Families of SELA  
4118 Franklin Ave.  
New Orleans, LA 70122

To register, call: 504-943-0343

### **Creating Access For All by the Louisiana Department of Education**

Maximize opportunities for academic success for students with mild to significant disabilities. Information on the *Access Guide* and extended standards will be discussed as well tips on using technology, modified instruction and accommodations.

Presenters: Nanette Olivier and Kristina Braud, State Department of Education

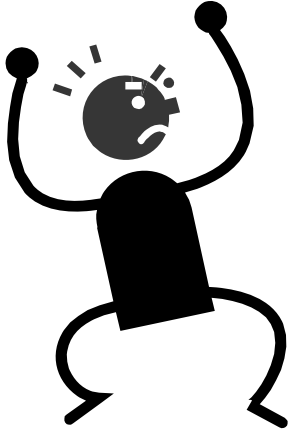
Date: September 17

Time: 12:00 noon - 2:00 p.m.

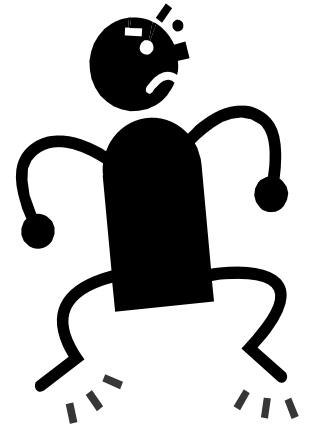
Location: Urban League of Greater New Orleans  
2322 Canal St  
New Orleans, LA

To register, call: 504-943-0343

Families Helping Families of Southeast Louisiana has partnered with the  
Greater New Orleans Association for the  
Education of Young Children  
to present



## 49 Ways to Handle the Hard-to-Handle Child



August 1, 2009  
Delgado Community College  
615 City Park Ave, Building 1  
New Orleans, LA 70119

9 am—12 noon

Some students are difficult to reach and teach. This strategy-packed session gives teachers and parents valuable tools for handling the hard to handle student. Receive tools for tattling, complaining, temper tantrums, whining, lying, angry, students with A.D.D. & Autism, students who are bullies, disruptive and/or challenging.

**Presented by Doug Medford of the Applebaum Institute, he will present twice, from 9 am—10:30 am and from 10:45 am to noon. You can attend this session and also have the opportunity to attend another session being offered by GNOAEEYC.**

Parents, this event is geared for families with children from birth to eight years old. **ONLY 60** participants will be accepted for this event. Participants will receive a **FREE** copy of "From Emotion to Advocacy" and "Special Education Law" by Pete and Pam Wright, valued at \$50.00

It is important to register to assure that ample seating is available.

The registration form is on page 19 or call **Donnica Conway** at [dconway@fhfsela.org](mailto:dconway@fhfsela.org) or **504-943-0343**. Please specify if you would like to attend the session twice or if you plan on attending the first or second session. You can choose to attend one other session that the conference offers along with this one. Call for information about what else is offered.



## Emergency Preparedness



Do you have a  
disability?

Are you ready for the next evacuation?

Did you know that you must register  
EVERY year with the parish?

Come join us at the  
**Chalmette Church of Christ**  
200 De La Ronde, Chalmette

Thursday, July 16, 2009  
4:30—7:30 p.m.

Agencies that assist with evacuation and recovery will be present, along with the Office of Homeland Security to take your registration.

We encourage **ANYONE** with a disability to come and register, even if you **DO** have transportation out of the parish. This registration will help to **ASSURE** that you have a way of escape, whether it is a natural or man-made disaster in our area. Refreshments will be served.

Call 504-943-0343  
for more information.



*The 2007 Presidential  
Candidates Forum hosted by  
Granite State Independent  
Living*

## Save the Date! Saturday, April 10, 2010

This year's annual Family Forum will feature artist, public speaker and self-advocate Keith Jones! Location to be announced at a later date. Want to get a taste of what is in store?

Go to

<http://fhfsela.ning.com/video/keith-jones>  
and see for yourself.

---

### **St. Bernard Autism Spectrum Disorder Support Group**

This group meets in Arabi, Louisiana and invites you to join them for networking, resources, group events, etc. Anyone interested can contact FHF of SELA at 504-943-0343 for more information.

# Sensory-Friendly showing of: **Ice Age: Dawn of the Dinosaurs** Saturday, July 11th

## 10:00am

AMC Entertainment® and the Autism Society of America have teamed up to bring families affected by autism a special opportunity to enjoy their favorite films in a safe and accepting environment on a monthly basis.

With Sensory Friendly Films, the movie auditoriums will have their lights brought up and the sound turned down.

**AMC Elmwood Palace 20**  
**1299 Elmwood Park Blvd.**  
**Harahan, LA 70123**  
**504-733-2029**

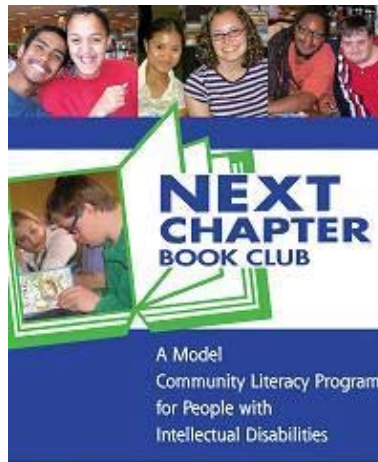
For tickets to this unique experience,  
please visit the theatre's box office the day of the event.



## Next Chapter Book Club



*Dr. Tom Fish, PhD, Program Director*



Tom Fish & Paula Rabidou  
with Jillian O'Neil & Yael L. W. Wolf



*Anke Gross, Dipl. Heilpaed  
(Dipl. Heilpaed - Social Worker)*

FHF of SELA staff recently had the honor of being visited by Dr. Tom Fish, Program Director, and Anke Gross from The Ohio State University Nisonger Center in Columbus, Ohio. They were in town to present at the AAIDD conference recently held in New Orleans.

NCBC is a program of The Ohio State University Nisonger Center, a research and training center on developmental disabilities. The program was founded in 2002 and has grown from two groups in Columbus, Ohio, to over 100 groups in the United States, Canada and Germany.

The NCBC model promotes **social connectedness, literacy learning, and community inclusion**. The premise is simple. A group of 5 to 8 people with intellectual disabilities and a wide range of reading skills gather with two trained volunteer facilitators in a local bookstore or café to read aloud and discuss a book for one hour a week. Much like members of any other book club, NCBC

members choose the book they want to read and how they would like to structure their club. Members are learning and making friends and having a lot of fun doing it.

Fay Daspit, Family Facilitator at FHF of SELA, is coordinating the local groups that are forming in our region.

Go to <http://fhfsela.ning.com/video/next-chapter-book-club> and watch the video recently posted on YouTube with valuable information about NCBC.

Want to volunteer? Call Fay at 504-943-0343 or 1-877-243-7352 for a volunteer application. (A background check will be conducted.)

If you are an individual with a disability and would like to join a book club, give Fay a call to be added to the list. A book club needs to have no less than four members and no more than eight. New groups will be formed as demand increases.

# People First of Louisiana

Come join us at 4118 Franklin Avenue, New Orleans, Louisiana on July 2, 2009 at 3:30 p.m.

## At People First



We realize that the perfect world is out in the future and the present world is in need of work. Therefore we need to embrace the Americans with Disabilities Act and the Olmstead Law.

By knowing our rights and responsibilities together along with individual supports, we will work for better services to make life better for all people with disabilities now in Louisiana.



An Advocacy Organization of The Arc of Louisiana funded by the Developmental Disabilities Council, and the Office for Citizens with Developmental Disabilities

### People First of Louisiana Executive Committee

Reginald Carey, President

Trudye Jones, Vice-President

Sheila Maneaux, Secretary

Dallas Cranshaw, Treasurer



*People First of Louisiana* is part of a larger group of people with disabilities across the country. Join a local chapter and meet other people with disabilities that come together as a community and support each other in speaking up for disability rights.

*It is important that our voice be heard.*

*Because...*

*We are People First!*



## Mission Statement

*People First of Louisiana* supports people with disabilities to empower themselves in becoming effective decision makers, to gain more independence, and enjoy life as equal citizens of the United States of America.

You can be a Leader...

## Join People First of Louisiana!

There are *People First* chapters across the state, call us to find out where your nearest chapter is located.

### Contact us:

365 North 4th Street  
Baton Rouge, Louisiana 70802  
(225)383-1033  
(866)966-6261



## People with disabilities

*have the same rights as all citizens.*



Learn about your rights and responsibilities as a citizen.

Learn about your right to vote.



Learn about making your own decisions.



Who will know what people with disabilities want unless we say what we want.



***We ran this in our last newsletter.  
Due to popular demand we are running it again.***

## ***Transportation for Medical Appointments***

Individuals with disabilities living in the three parishes that this office serves can attest to the fact that transportation is on the short list of issues that need to be resolved. The state of Louisiana now has a program to assist families to get to medical appointments. Many of our physicians are now located outside of our parishes. Because bus services will not cross into other parishes, our families are not able to get to the doctor they need to see. Feel free to make copies of the application on page 13.



### **Louisiana Medicaid's Friends & Family Transportation Program**

**The Friends & Family Transportation Program  
pays your friend or family member  
to take you to the doctor**

**You must already receive full Medicaid  
benefits to qualify for this program**

#### **Your friend or family member must:**

- ❖ Have a current Louisiana Driver's License
- ❖ Have a current Louisiana State Inspection Sticker
- ❖ Have minimum liability car insurance as required by the State of Louisiana
- ❖ Fill out an application and receive an approval letter from **The Friends & Family Transportation Program**

#### **To Get An Application**

**Call the Transportation Contractor closest to you.  
(The phone numbers are on the back).  
OR  
Visit us on the web at  
[www.Medicaid.DHH.Louisiana.gov](http://www.Medicaid.DHH.Louisiana.gov)**

#### **Call the Transportation Contractor to Learn More and to Get an Application**

<b>Alexandria</b>	<b>1-800-446-3490</b>
<b>Baton Rouge</b>	<b>1-800-259-1944</b>
<b>Lafayette</b>	<b>1-800-864-6034</b>
<b>Lake Charles</b>	<b>1-800-864-6034</b>
<b>Monroe</b>	<b>1-800-259-1835</b>
<b>New Orleans</b>	<b>1-800-836-9587</b>
<b>Shreveport</b>	<b>1-800-259-7235</b>

#### **After Qualifying:**

- ❖ Call the Transportation Contractor at least 24 hours before each appointment to let them know the date and time of your appointment.
- ❖ Call as soon as possible after an emergency visit.

**They may sign up to provide transportation for up to 5 people.**

This public document was published at a cost of \$2,000.00. Thirty thousand (30,000) copies of this public document were published in this first printing at a cost of \$2,000.00. The total cost of all printings of this document, including reprints, is \$2,000.00. This document was published by Office of State Printing, 950 Brieryard Lane, Baton Rouge, LA 70804, to advise applicants, recipients and other individuals about the Friends and Family Transportation Program through the Medicaid Program under authority of 42 CFR 435.906 (a)(1). This material was printed in accordance with the standards for printing by state agencies established pursuant to R.S. 43:31. Printing of this material was purchased in accordance with provisions of Title 43 of the Louisiana Revised Statutes.

SHSP R/yr FF  
Issued 02/08

**Louisiana Department of Health and Hospitals  
1-888-342-6207**



**\*\*FRIENDS AND FAMILY TRANSPORTATION PROVIDER ENROLLMENT FORM\*\***

**Driver Information:** *(Please Print)*

**Telephone Number:**

\_\_\_\_\_  
Last Name                      First Name                      Middle

\_\_\_\_\_  
(    )

**Mailing Address:**

**Social Security Number:**

\_\_\_\_\_  
Street Address/P O Box

\_\_\_\_\_  
City                                      State                                      Zip Code

**Note to Family Member or Friend**

Please read the form carefully, and, if you meet the requirements, complete the form and return to:

**Unisys--Provider Enrollment, P. O. Box 80159, Baton Rouge, LA 70898-0159**

I swear that I meet the following requirements for enrollment in the Medicaid Program as a friend or relative transportation provider:

I have a current Louisiana Driver's license that is not suspended or revoked  Yes  No

Driver's License Number \_\_\_\_\_

I have a current Louisiana State inspection sticker on my car  Yes  No

Car License Plate Number \_\_\_\_\_

I carry liability insurance on my car and it is at least the minimum insurance required by the state of Louisiana (10-20-10)  Yes  No

Name of Insurance Company \_\_\_\_\_

I understand that false statements regarding the above information can subject me to fines, penalties, and/or imprisonment.

\_\_\_\_\_  
Signature of Family or Friend Driver

\_\_\_\_\_  
Date

***This form must be notarized before returning to us.***

Area Reserved for Notary Seal

\_\_\_\_\_  
Signature

\_\_\_\_\_  
Date

**I will transport the following people: limited to three individuals or a family household (list all members). -- Cannot exceed 5 individuals**

The following people live in \_\_\_\_\_ parish.

Recipient/Recipient Name <i>(Please Print)</i>	Date of Birth Mo / Day / Year (8 digits)	Medicaid Plastic Card Control Number (16 digit CCN Number on Medicaid Card)
1. _____	_____	_____
2. _____	_____	_____
3. _____	_____	_____
4. _____	_____	_____
5. _____	_____	_____

+  
Cat/Service: 23

Provider Number:  
Claim Type: 08

Provider Type: 42

Begin Date:

Parish:  
End Date:

**GoodSearch**  
YOU SEARCH WE GIVE™

**NEW!**  
**GoodShop** Shop at your favorite stores and we'll donate up to 37% of every purchase to your favorite charity! **SHOP NOW!**

amazon.com eBay Target Nike Staples PetSmart hp WAL-MART Apple Expedia venstock.com

Families Helping Families of Southeast Louisiana has earned **\$162.13** so far this year through your Goodsearch and GoodShop activities. We thank everyone for helping to raise money for our agency.

Many thanks to the St. Bernard Volunteers for Family and Community (2008 Christmas Tour of Homes) for their recent generous donation. FHF of SELA is very thankful for their support of the work we do. Because we are a non-profit agency, all donations are tax-deductable and we welcome any and all donations, big or small.

FHF of SELA has funding available to help family members and self-advocates attend conferences. Please call Carol at 504-943-0343. FUNDS ARE LIMITED AND ARE PROVIDED ON A FIRST-COME, FIRST-SERVED BASIS.



*The Mission of Families Helping Families of Southeast Louisiana is to enable and empower families of individuals with disabilities through an effective coordinated network of resources, support, and services.*

*The Vision of Families Helping Families of Southeast Louisiana is to ensure all individuals with disabilities have the opportunity to attend school, live, work and recreate in their community with typical peers.*

## GOING BACK TO THE IEP TABLE THIS FALL? THINK ABOUT HEALTH GOALS FOR INDEPENDENCE!



*"He who has health has hope; and he who has hope has everything."  
~Arabic Proverb*

It's not something we think about. You take your child to the doctor and you and the doctor talk about his or her health, school, and other issues. But as parents of children with special needs, we need to make sure we think about teaching our children health skills and how to work with their doctors.

To be successful, kids need to know how to take care of their health and understand their own health needs. Let's face it, we won't be around forever to care for them and support them. But where do you begin? Individualized Health Plans aren't plans to teach your child health skills. They're there for the school system to manage your child's health care while at school.

By federal law, a transition to the adult world must begin for students with disabilities at age 16. Some parishes in Louisiana even begin at age 14. But we can begin teaching health skills for future independence to children at a young age by looking at the grade level expectations (GLE's) and then considering what health skills might be beneficial. GLE's are a list of what all kids are supposed to be taught each year in Louisiana schools as determined by the LA State Board of Elementary and Secondary Education. You can find a list of all the GLE's for every grade level by going to <http://www.doe.state.la.us/lde/saa/1819.html>.

After looking at GLE's you'll want to consider some skills that your child might need. Basic skills include understanding a balanced diet, understanding how our bodies function, tracking how we feel, what we eat and being able to communicate with doctors. Being able to develop the language skills necessary to communicate health concerns and issues is extremely important to children and youth with special needs and their independence.

More intermediate and advanced skills would include teaching your child their doctors' names, understanding how to take their medicine on their own or with minimal supports, learning the side effects of their medications, understanding their illness or disability and knowing the changes in their condition that need to be reported to a doctor immediately. Additional health concerns would be healthy diet and exercise, developing emergency plans for a variety of possibilities and understanding the effects of risky behavior on their condition, knowing how to refill a prescription.

Here are some examples of health-related goals that incorporate Louisiana state GLE's. For more information on teaching children health-related skills and incorporating them into their IEPs, contact the LA Family to Family Health Information Center at 1-800-331-5570.

**Basic Health Skills Example:**

**IEP Goal:** Johnny will talk to Ms. Smith each day about how he feels.

**Objective 1:** Johnny will learn 10 of 20 body parts

**Objective 2:** Johnny will learn what each body part does

**Objective 3:** Johnny will learn words to describe how his body feels

**Intermediate-Advanced Skills Examples:**

**IEP Goal:** Carlos will learn more about Celiac Disease and his health needs related to his Celiac Disease.

**Objective 1:** Carlos will learn what causes Celiac Disease and how it is treated

**Objective 2:** Carlos will learn 10 points about the diet necessary to stay healthy with Celiac Disease

**Objective 3:** Carlos will learn the effects of improper diet and Celiac Disease

**Objective 4:** Carlos will make a 5 minute presentation to the class on Celiac Disease and write a 3 page report

**IEP Goal:** Hannah will learn about ADHD and the effects of drugs and alcohol on her ADHD and medications.

**Objective 1:** Hannah will learn what ADHD is

**Objective 2:** Hannah will identify 5 ways that her ADHD affects her

**Objective 3:** Hannah will identify stress situations that make her ADHD symptoms worse

**Objective 4:** Hannah will learn the side effects of her medication for ADHD

**Objective 5:** Hannah will learn the effects of taking other drugs with her medications

**Objective 6:** Hannah will learn the effects of drinking and taking her ADHD medication

**IEP Goal:** Lian will learn more about the potential emergency hazards in his area and how to prepare for those possibilities.

**Objective 1:** Lian will research possible emergency conditions that could occur in his area

**Objective 2:** Lian will develop a plan for at least 1 emergency contingency that is not a hurricane

**Objective 3:** Lian will develop a plan for evacuation during a hurricane emergency

**Objective 4:** Lian will develop a list for packing for evacuation

**Objective 5:** Lian will research and prepare a list for an emergency home kit

## Health and Transition Resources for Students with Special Needs

### **HEALTHY & READY TO WORK** [www.hrtw.org](http://www.hrtw.org)

Portable Medical Summary, Understanding Health Insurance, Decisions & Making Choices

### **HRTW Portal - Laws that Affect CYSHCN** [http://www.hrtw.org/tools/laws\\_leg.html](http://www.hrtw.org/tools/laws_leg.html)

Disability Rights, Education Issues, Employment & Disability, Equal Opportunity Access (504, 508 & ADA), Family Medical Leave Act, HRSA/MCHB - Title V Legislation, Health Insurance Benefits, SSI/SSDI

### **ADOLESCENT HEALTH TRANSITION PROJECT** <http://depts.washington.edu/healthtr/index.html>

Transition Timeline for Children and Youth with Special Health Care Needs to help you think about the future; Adolescent Autonomy Checklists

### **HEALTH AND HEALTHCARE IN SCHOOLS** <http://www.healthinschools.org/>

### **NICHCY - National Dissemination Center for Children with Disabilities** [www.nichcy.org](http://www.nichcy.org)

Materials for families IDEA, Related Services and education issues, health and disability topics- in English/Spanish

### **Health and Medical Issues for Transition-age Adolescents with Disabilities and/or Health Care Needs: A Guide for Teenagers and Their Families (2nd edition)**

<http://www.hdc.lsuhs.edu/Programs/CDP/Products/secnded.pdf>

### **Post-Secondary Education Issues for Transition-Age Adolescents with Disabilities and/or Special Health Care Needs: A Guide for Teenagers and Their Families**

<http://www.hdc.lsuhs.edu/Programs/CDP/Products/tfguide1.pdf>

## LOUISIANA YOUTH ENHANCED SERVICES (LA-Y.E.S.) ACTIVITIES

### July

**10:** 10-11:30 am- LA-Y.E.S. Consortium meeting, University of New Orleans, Kirschmann Hall

**16:** 5:30-7 pm- LA-Y.E.S. Family Support Group meeting at NOAH, 200 State Street, NOLA, 1<sup>st</sup> Floor Patio Room

**18:** 9:30 am-12 p m-Family Involvement Enhancement Project (FIEP) Summer mini-session begins at the Louisiana Children's Museum. LA-Y.E.S. FIEP is a collaborative initiative between the Louisiana Children's Museum, LA-Y.E.S., and the Louisiana Federation of Families for Children's Mental Health. FIEP is designed to support family involvement in the System of Care development by creating a series of family workshops that will help develop communication, support, and leadership skills. The project focuses on families and children understanding and respecting individuals' background and culture, increasing awareness in mental health, and decreasing stigma and barriers associated with mental illness.

**25:** 9:30 am-12 p m FIEP workshop - See Above

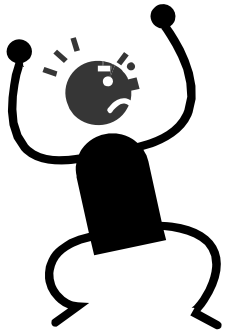
### August

**15:** 9:30 am-12 p m FIEP workshop - See Above

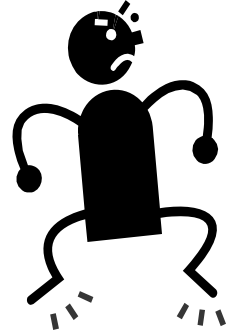
**20:** 5:30-7 pm- LA-Y.E.S. Family Support Group meeting at NOAH, 200 State Street, NOLA, 1<sup>st</sup> Floor Patio Room

**22:** 9:30 am-12 p m FIEP workshop - See Above

If you have any questions or need more information, please do not hesitate to call the LA-Y.E.S. Key Family Contact Ms. Brenda Valteau at 504-896-2623 or email [brenda.valteau@la.gov](mailto:brenda.valteau@la.gov).



# 49 Ways to Handle the Hard-to-Handle Child Registration Form



**August 1, 2009**

**Delgado Community College  
615 City Park Ave, Building 1  
New Orleans, LA 70119**

**9 am—12 noon**

Please complete the registration form below and return to FHF of SELA no later than **Friday July 24, 2009.**

Name: \_\_\_\_\_

Are you the parent of a child with behavior issues? : \_\_\_\_\_

Phone Number: \_\_\_\_\_

Address: \_\_\_\_\_

City, State, Zip: \_\_\_\_\_

Fax: \_\_\_\_\_

Email: \_\_\_\_\_

**Return to:**

FHF of SELA by fax: 504-940-3242

or

By mail: 4118 Franklin Avenue, New Orleans, LA 70122

or

call us at 504-943-0343

